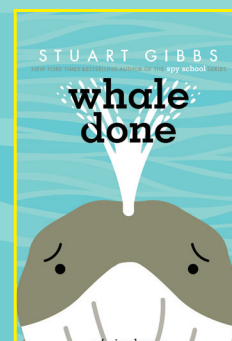
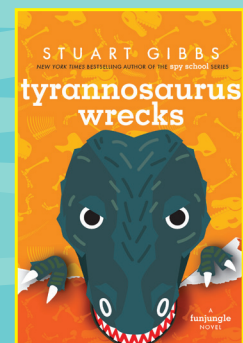
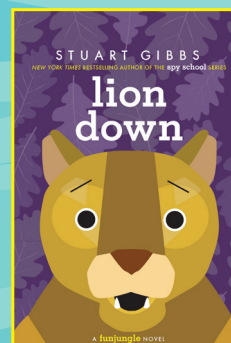
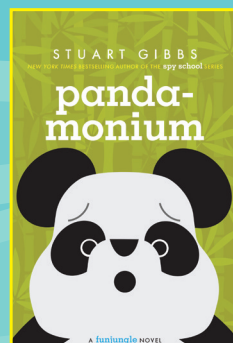
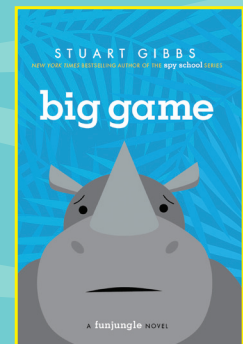
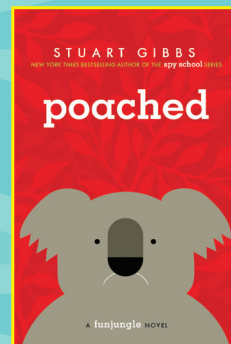


WELCOME TO funjungle

THE funjungle SERIES BY
STUART GIBBS



Explore the animal kingdom with a wild whodunit from **STUART GIBBS!**

We invite you and/or your students to take a fictional field trip to the most exciting zoo ever built and become junior zookeepers with these ferociously fun activities! This can be used at home or in classrooms.

FUNJUNGLE'S NEWEST ATTRACTION

(Activity sheet on page 3)

FunJungle is looking to create some new exhibits featuring endangered species and the zoo's owner, J.J. McCracken wants your students to design them! In order to design the exhibit, each of your students will have to become an expert on one endangered animal. You can assign animals by having students pick them out of a hat or ask each student to pick an animal that fascinates them. Once everyone has designed their exhibits, have them present the special features they picked to show off the unique traits and behaviors of their animal.

WILD FACT SCRAMBLE (Activity sheet on page 4)

Your students are the newest tour guides at FunJungle, but during their first day on the job, their notecards with facts about four of the zoo's most popular animals get jumbled together. Can they figure out which lesser known traits belong to each animal?

Answers, from top left to bottom right: *Hippopotamus, Mountain Lion, Panda, Koala, Rhinoceros, Hippopotamus, Rhinoceros, Mountain Lion, Koala, Panda.*

ANIMAL CROSSING (Activity sheet on page 5)

Can your students puzzle together which zoo animals these fun facts are about? If they get stumped, remind them that filling in other clues will provide them with letters that might help! Once they've run out of clues they know the answer to, you can provide them with an additional hint.

Answers: Down: 1. *Orangutan*, 2. *Zebra*, 5. *Dolphin*, 7. *Shark*, 8. *Tiger*. Across: 3. *Giraffe*, 4. *Elephant*, 6. *Lion*, 9. *Polar Bear*, 10. *Penguin*.

GUESS THAT ANIMAL (Activity sheet on page 6)

Get to know endangered species with a guessing game! Make two copies of the activity sheet then cut along the dotted line to create two sets of cards. When you're ready to play, divide your class into two teams and give each team a set of cards.

How to Play: Each team must pick a player to guess first. On your signal, the chosen players on both teams should hold the stack of cards against their forehead so they can't see what is on them. Their teammates can call out clues to help the player guess what animal is listed on the card. Each player will have one minute to guess as many of the animals as possible. If teammates use one of the words on the card as a clue, no points will be awarded. And, if you want to make things extra challenging, you can ban the use of "rhymes with" hints.

When time is up, total the number of cards each team was able to guess successfully. The team with the most correct guesses at the end of the game wins—or, if your class is full of animal experts, whoever gets through their stack of cards first wins!

Want to keep the fun going? You can always create more cards by writing the names of other endangered species on index cards!

DECODE IT! (Activity sheet on page 7)

Match the given symbol in the key with the corresponding letter of the alphabet to decode these mind-blowing whale facts.

Answers: The blue whale is the largest animal that has ever lived on earth.

Their tongues alone can weigh six thousand pounds, the same as a hippopotamus.

The spray that comes out of a whale's blowhole is not only water, but mucus too!

FunJungle's **NEWEST ATTRACTION!**

There's a brand-new exhibit opening at FunJungle and zoo tycoon J.J. McCracken wants you to design it! Since you're an expert on this particular endangered species, J.J. is counting on you to dream up an enclosure that will have visitors lining up to see it. It should have three features that show off the coolest and most interesting things about FunJungle's newest inhabitant (for example: Hippo River features an underground restaurant where you can watch the hippopotami swim underwater, since they spend most of their day below the surface).

Draw a picture of the exhibit below. When you're done, make sure to come up with a name for the exhibit that is sure to entice the animal-loving masses!

Designed by _____ (your name)
_____ (latin name for your species) (_____ (commonly known as)) expert



Why is this animal endangered?

Wild Fact SCRAMBLE!

It's your first day on the job as a tour guide at FunJungle and disaster has struck—your notecards blew out of your hands and now they're out of order! Can you figure out which fun facts you'll need to introduce visitors to each of the zoo's main attractions? Fill in the blank at the top of each card with one of the animals named below.



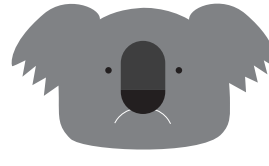
Mountain Lion



Panda



Rhinoceros



Koala



Hippopotamus

Don't bother challenging them to a contest to see who can hold their breath the longest. They can stay underwater for ten minutes at a time without coming up for air!

You definitely wouldn't be able to pick them out in their baby pictures—they are born with spots and blue eyes, but by the time they're a year and a half old their spots disappear and their eyes turn yellow!

They spend most of their waking life eating. They eat between twenty-five and forty pounds a day, which takes about sixteen hours!

They spend so little time thinking, their brains seem to have shrunk over the last 300 years. They are the only known animal whose brain fills only half its skull!

Who needs sunblock when you can roll around in mud? These animals "wallow" in mud then let it dry to protect their skin from the sun!

They're more dangerous than they look! Their foot-long teeth are sharp enough to bite a crocodile in half.

They have a pretty gross way of keeping in touch. Each one's poop has a unique smell, so they often relieve themselves in communal piles so their friends and neighbors will know they're around.

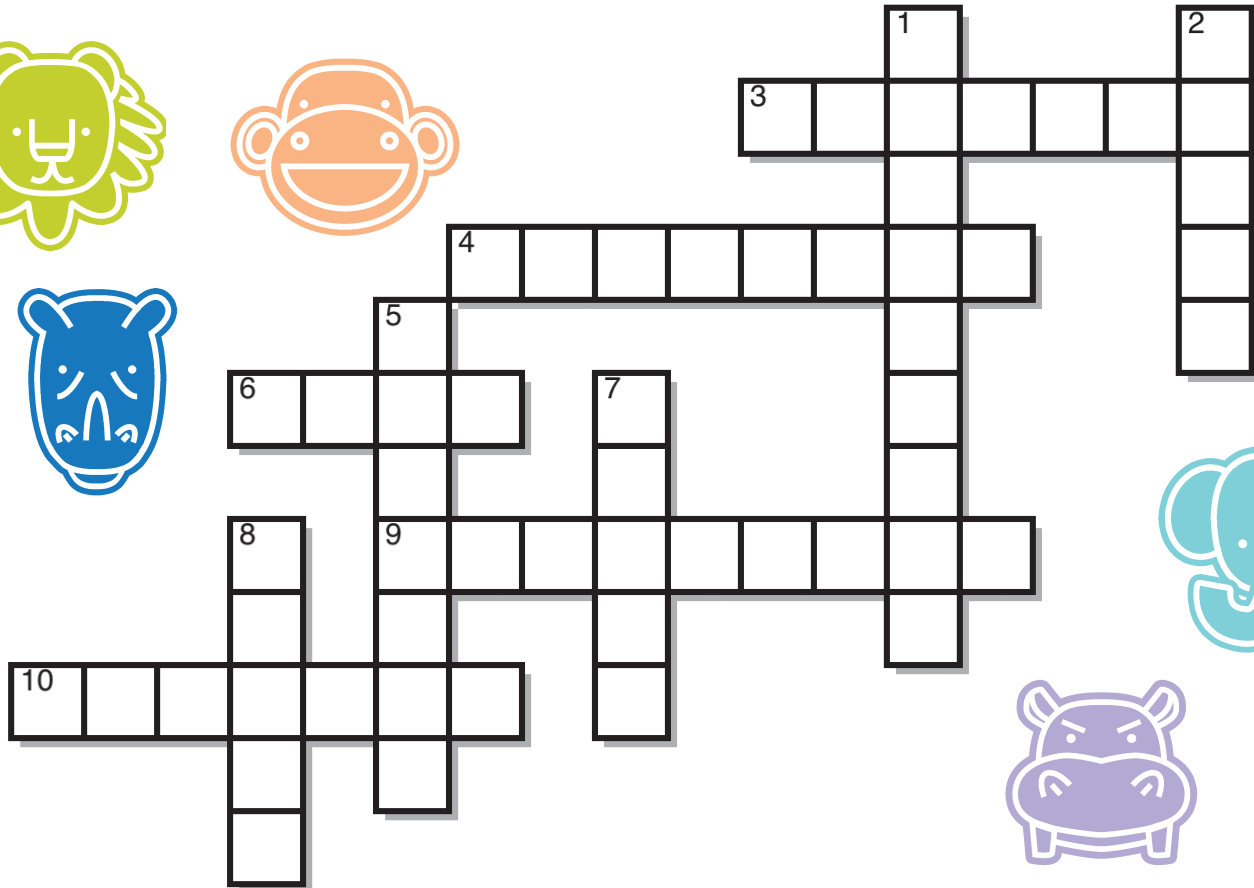
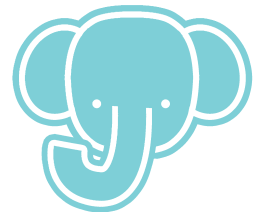
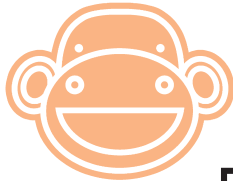
A bunch of big cities in America were built smack dab in the middle of their territory and they didn't move too far away. One lived in a park in the middle of LA for years!

Their round faces are super cute, but the reason they have such big cheeks is because chewing on bamboo all day makes their jaw muscles massive.

Their favorite food is one of the main ingredients used to make cough drops. So, the smell of this exhibit might bring back memories of the last time you had a sore throat!

Animal CROSSING!

Can you figure out which inhabitant of FunJungle each of these facts is about? Once you've figured out the answers and filled in the crossword, quiz your friends and family to see how many they can guess!



DOWN

1. This red-haired ape is one of the closest relatives of human beings—it shares nearly 97% of our DNA!
2. Scientists aren't exactly sure if this herbivore's stripes are for camouflage, temperature control, or something else entirely. But they do know each one has a unique coat.
5. This playful sea creature is an especially fast learner. It can learn new tricks just by watching people do them first.
7. This predator of the deep has a bad reputation, but around the world it kills fewer than ten people a year.
8. This ferocious feline's roar is pretty loud. You can hear it from almost two miles away!

ACROSS

3. It's no surprise that a group of this animal is called a tower.
4. This gentle giant is known for its tremendous memory, but it can also run twenty-five miles an hour! (And did you know it's the only animal with four knees?)
6. This big cat needs its beauty rest. On a typical day, it can sleep up to twenty hours!
9. This arctic dweller has paws as big as baseball mitts!
10. This flightless bird doesn't have teeth, but it does have spines on its tongue and inside its beak to help it catch its prey.

Stumped? Take a look at the rest of the clues to see if you know any other answers before peeking at the answer key! Sometimes, filling in one answer will provide you with letters that make another one easier to figure out.

GUESS THAT ANIMAL!

CHEETAH

TIGER

PANDA

ELEPHANT

ALLIGATOR

ORCA

SPIDER MONKEY

CHIMPANZEE

BLUE WHALE

LION

RED WOLF

LEOPARD

GREEN SEA TURTLE

KOALA

BLACK RHINOCEROS

SPOTTED SEAL

MOUNTAIN ZEBRA

ORANGUTAN

GORILLA

GIANT OTTER

LEMUR

SNOW LEOPARD

OCELOT

POLAR BEAR

DECODE IT!

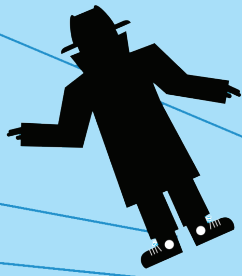
You found an exploded whale on the beach and Teddy Fitzroy is now telling you everything he knows about whales. But there's sand in your ears and the waves are too loud so you can only hear bits and pieces. Match the given symbol with the corresponding letter of the alphabet to decode these mind-blowing whale facts and impress your friends!

A	B	C	D	E	F	G	H	I	J	K	L	M
+	>	□	■	△	▲	○	●	⊙	≡	≡	=	—
N	O	P	Q	R	S	T	U	V	W	X	Y	Z
■	□	∧	⊕					⊗	▼	◆	⊙	⊔

The > = ||| △ ▼ ● + = △ is the largest animal that has ever lived on earth.

Their tongues alone can weigh || ⊙ ◆ ||| ● □ ||| || + ■ ■ ∧ □ ||| ■ ■ || , the same as α ● ⊙ ∧ ∧ □ ∧ □ ||| + — ||| || .

The spray that comes out of a whale's > = □ ▼ ● □ = △ is not only ▼ + ||| △ | , but — ||| □ ||| || too!

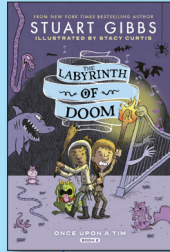
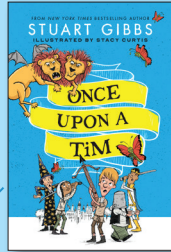


STUART GIBBS

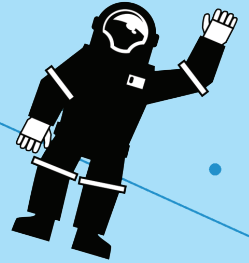


If you enjoy the FunJungle series, check out Stuart Gibbs' other series!

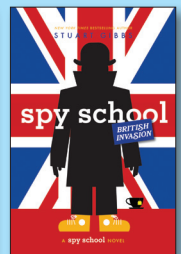
The Once Upon a Tim series



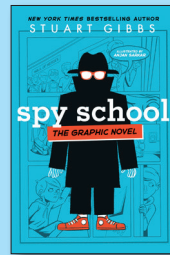
NEW



The Spy School series



NEW



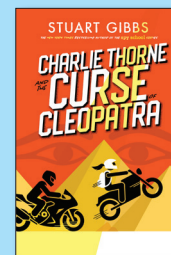
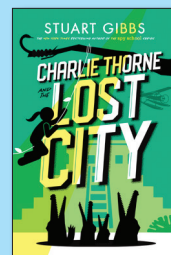
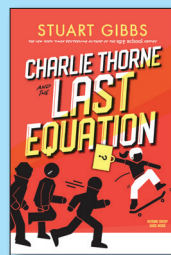
NEW

Spy School Graphic Novels

The Moon Base Alpha series



The Charlie Thorne Series



For additional resources including videos, discussion guides, and more, visit SimonandSchuster.net